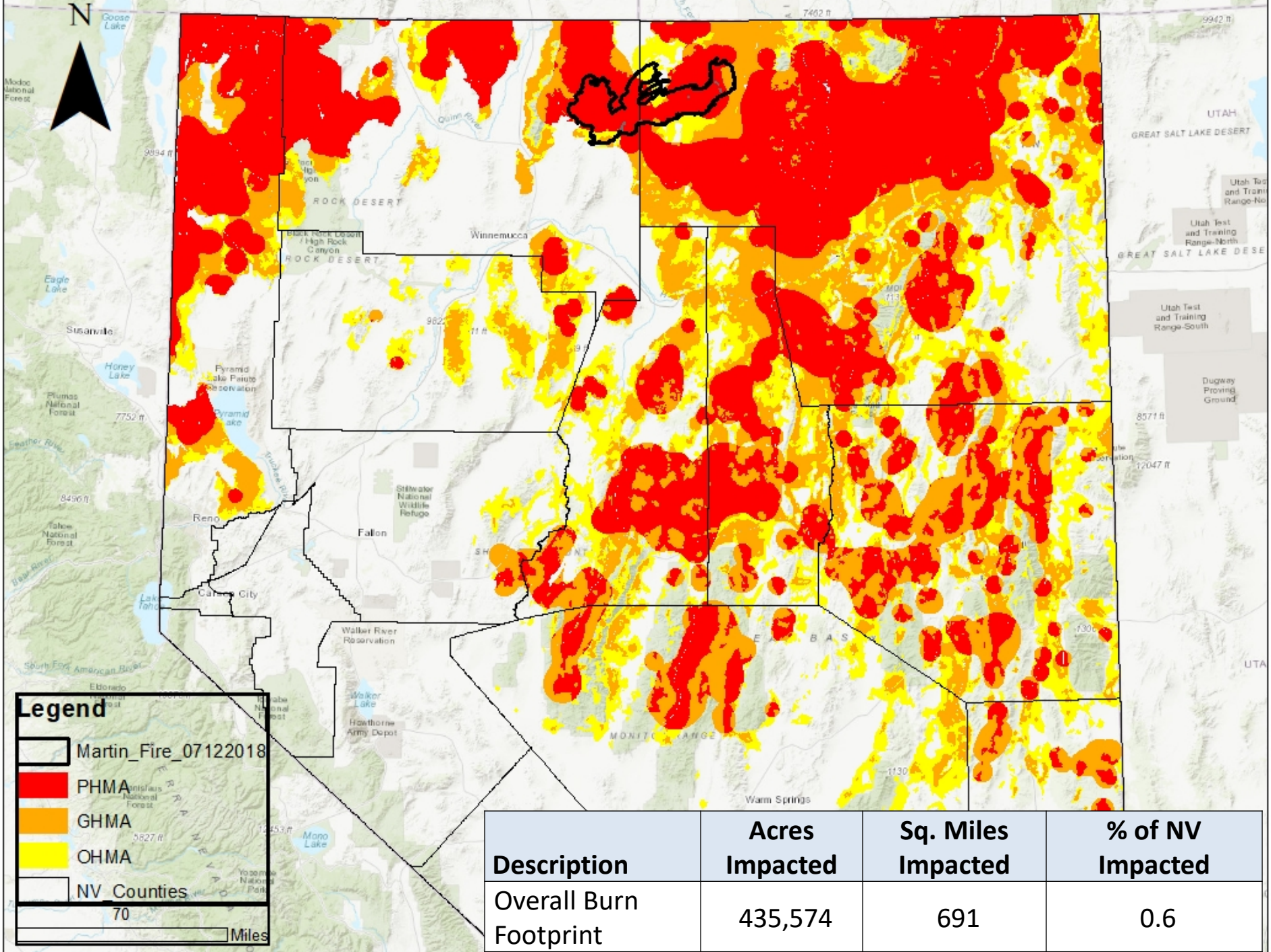




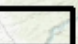




# The Martin Fire, Habitat, and Greater Sage-Grouse

Sagebrush Ecosystem Council  
Meeting

July 17<sup>th</sup>, 2018



**Legend**

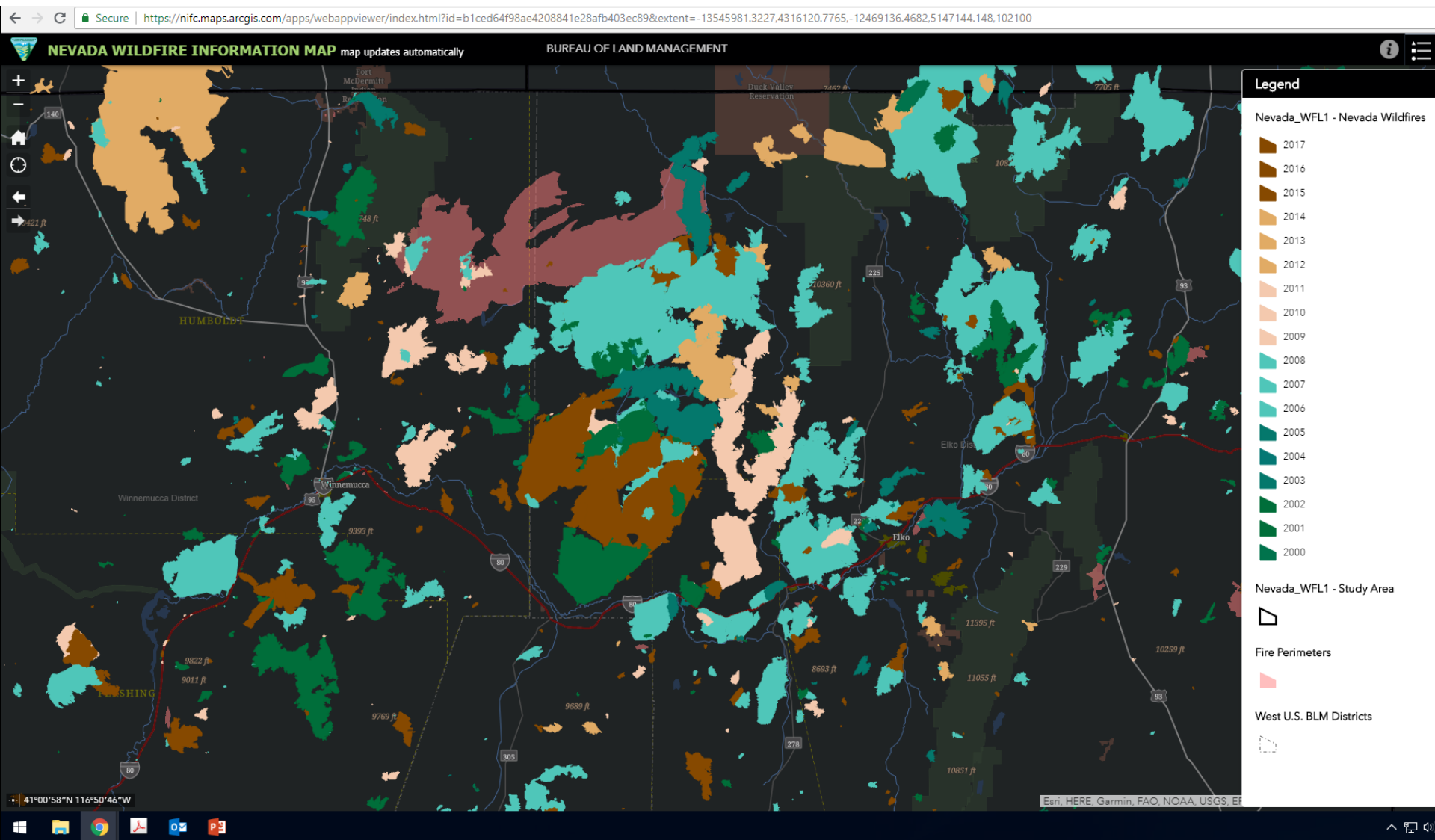
-  Martin\_Fire\_07122018
-  PHMA
-  GHMA
-  OHMA
-  NV Counties

70 Miles

Description	Acres Impacted	Sq. Miles Impacted	% of NV Impacted
Overall Burn Footprint	435,574	691	0.6

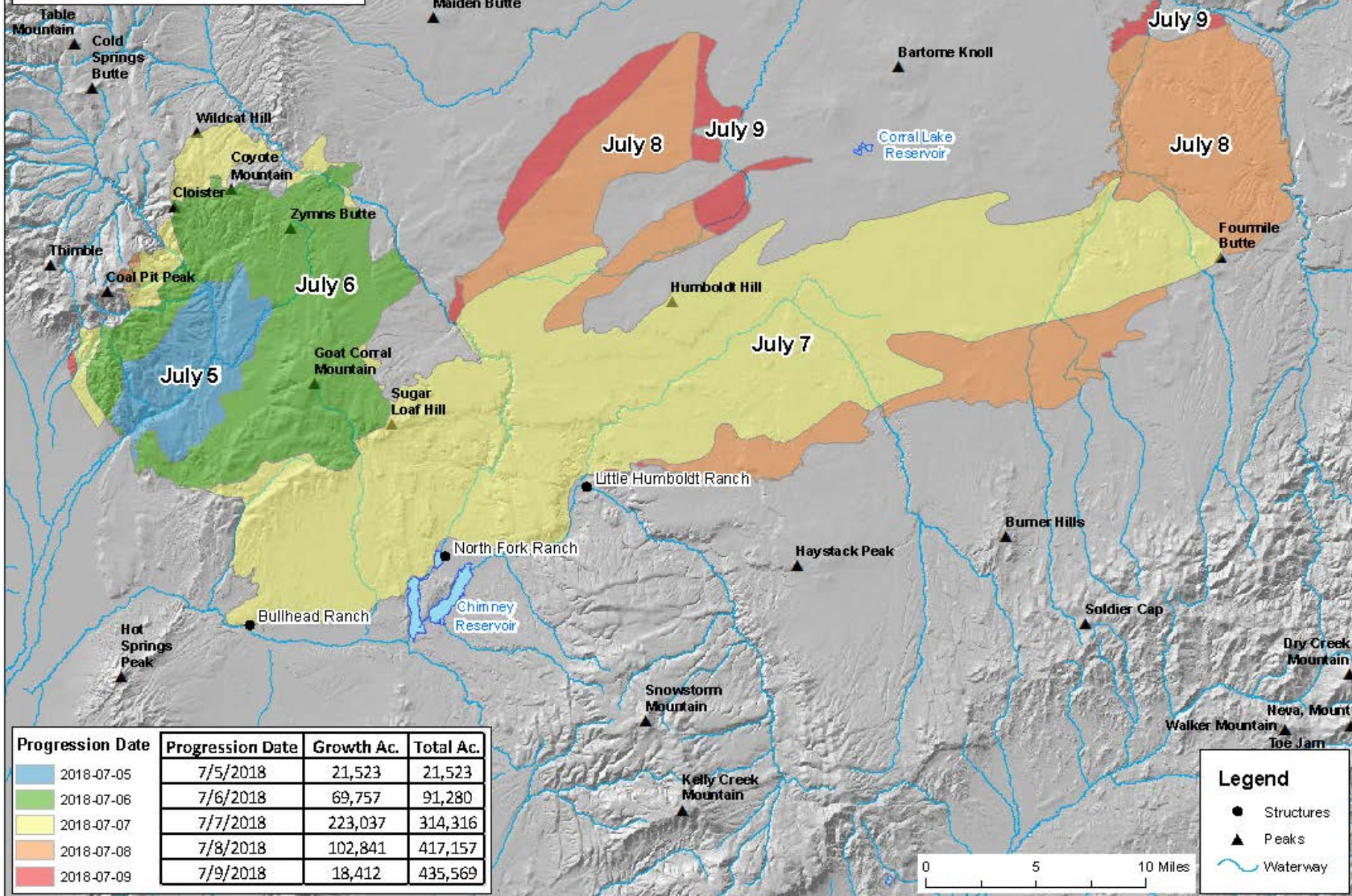




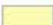


# Historical Wildfire in the Area






# Progression Map

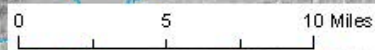
**Martin Fire**  
 NV-HUMX-020170  
 7/12/2018  
 435,569 ACRES



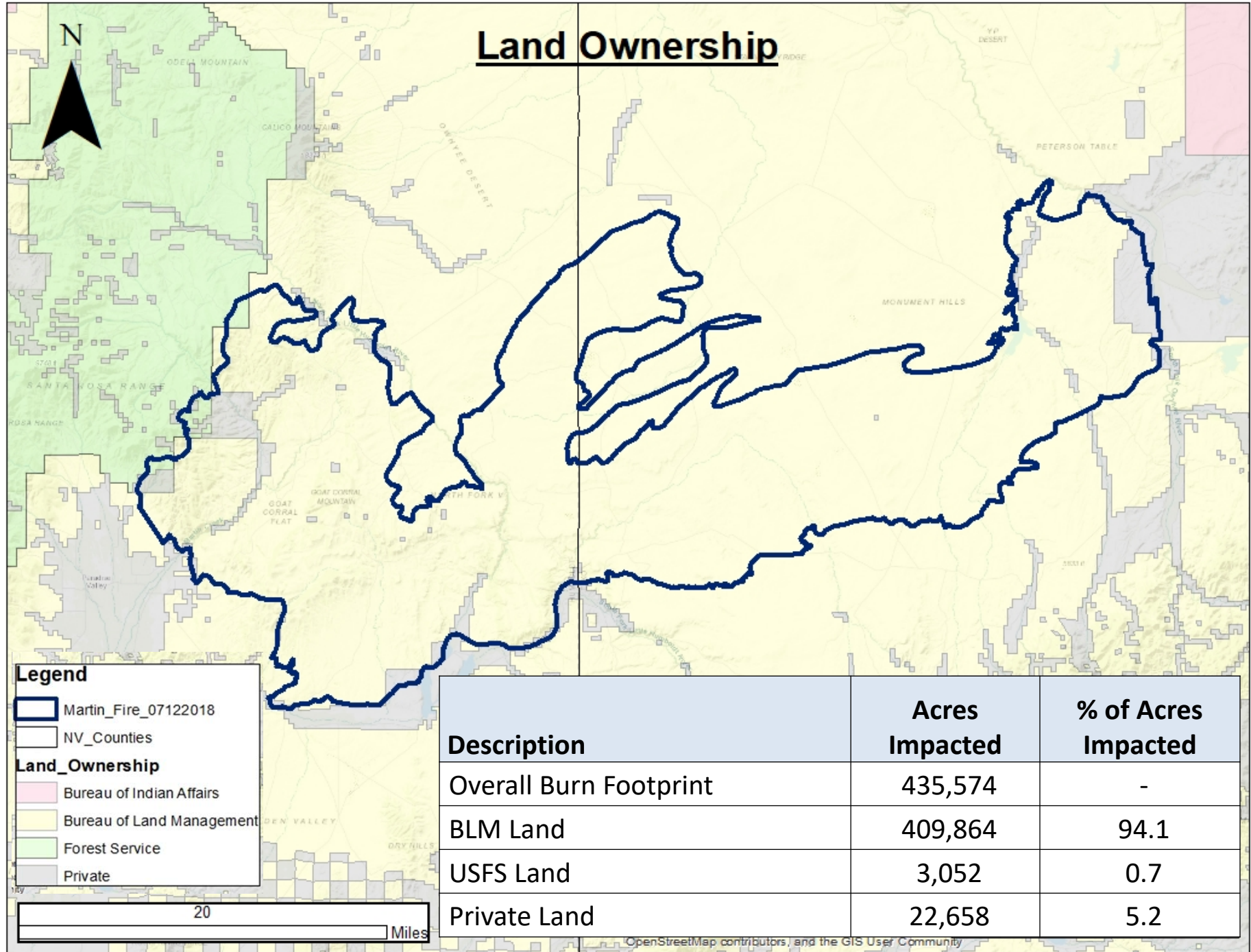
Progression Date	Progression Date	Growth Ac.	Total Ac.
 2018-07-05	7/5/2018	21,523	21,523
 2018-07-06	7/6/2018	69,757	91,280
 2018-07-07	7/7/2018	223,037	314,316
 2018-07-08	7/8/2018	102,841	417,157
 2018-07-09	7/9/2018	18,412	435,569

**Legend**

-  Structures
-  Peaks
-  Waterway



# Land Ownership

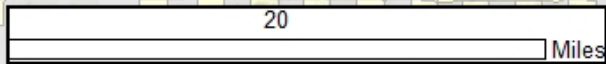


**Legend**

- Martin\_Fire\_07122018
- NV\_Counties

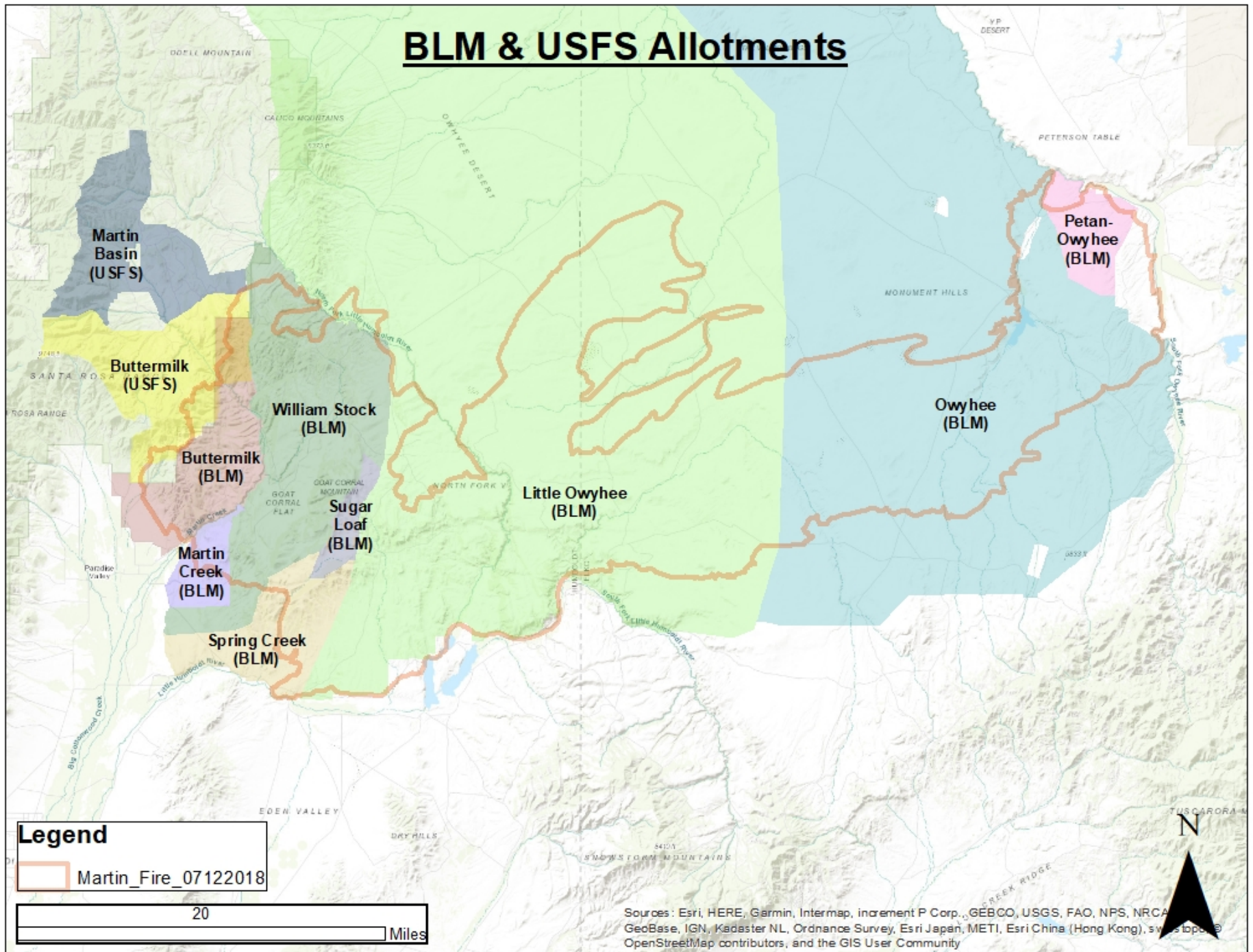
**Land\_Ownership**

- Bureau of Indian Affairs
- Bureau of Land Management
- Forest Service
- Private



Description	Acres Impacted	% of Acres Impacted
Overall Burn Footprint	435,574	-
BLM Land	409,864	94.1
USFS Land	3,052	0.7
Private Land	22,658	5.2

# BLM & USFS Allotments

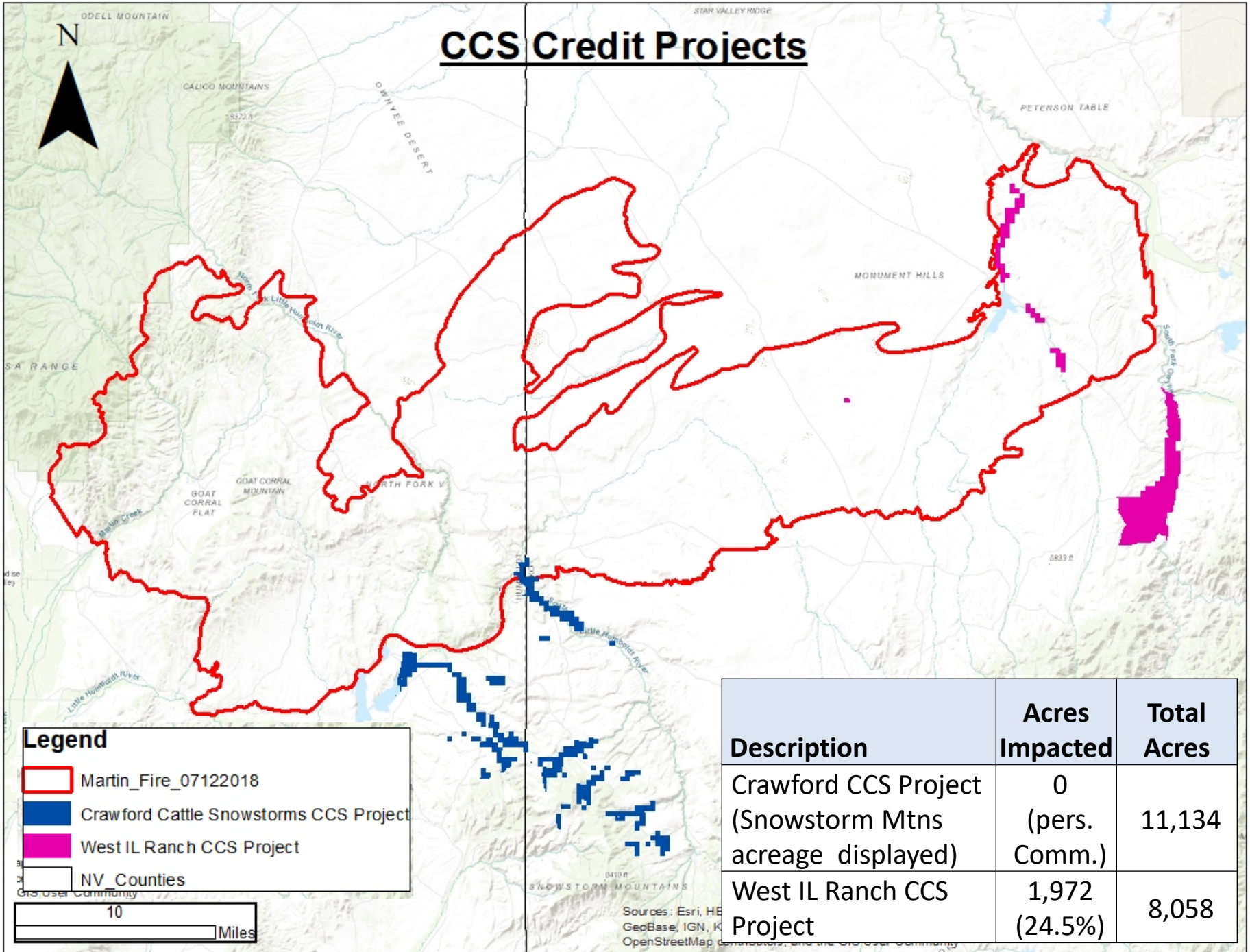


**Legend**  
Martin\_Fire\_07122018

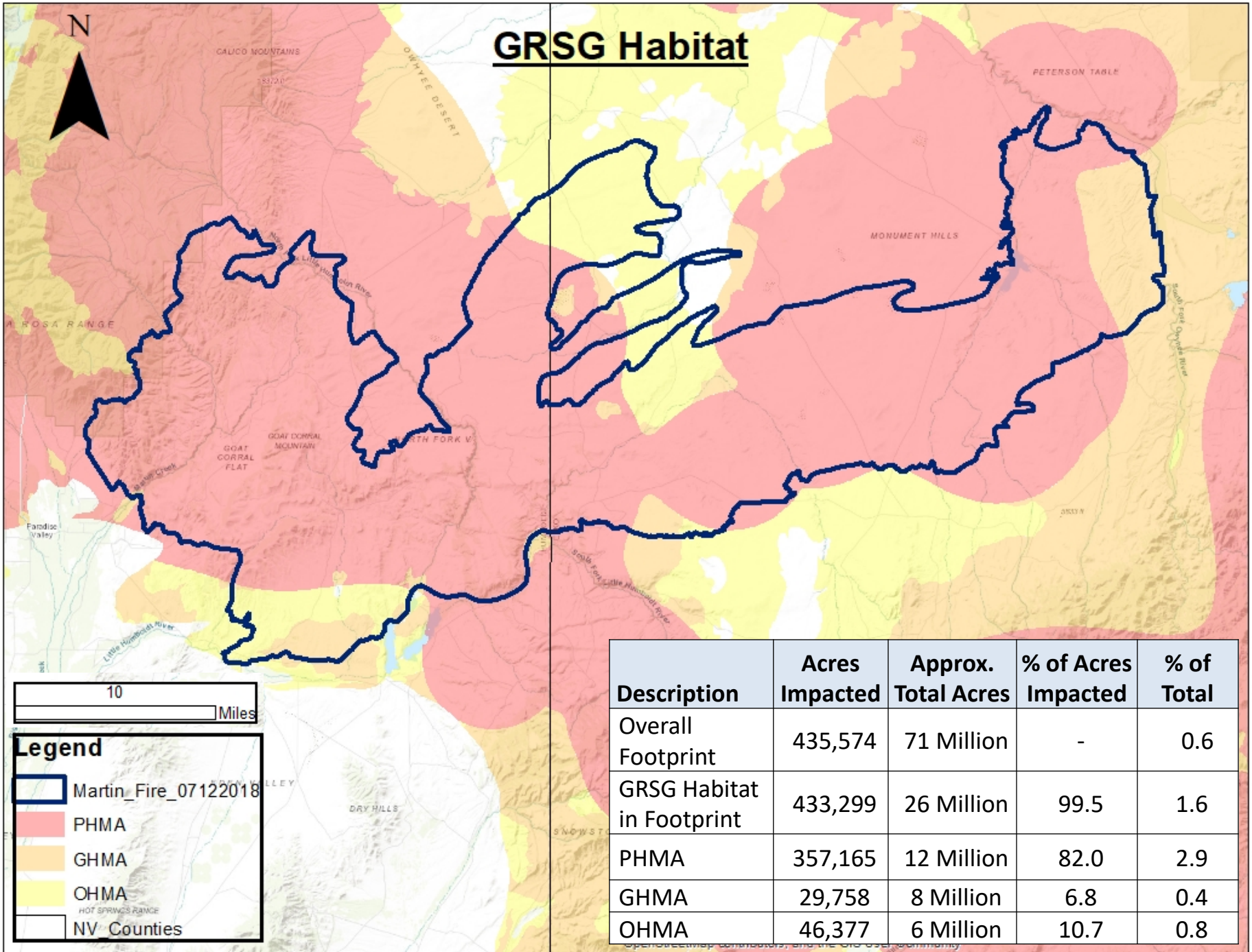
20 Miles

Sources: Esri, HERE, Garmin, Intermap, increment P Corp., GEBCO, USGS, FAO, NPS, NRCAGeoBase, IGN, Kadaster NL, Ordnance Survey, Esri Japan, METI, Esri China (Hong Kong), Swisstopo, OpenStreetMap contributors, and the GIS User Community

# CCS Credit Projects

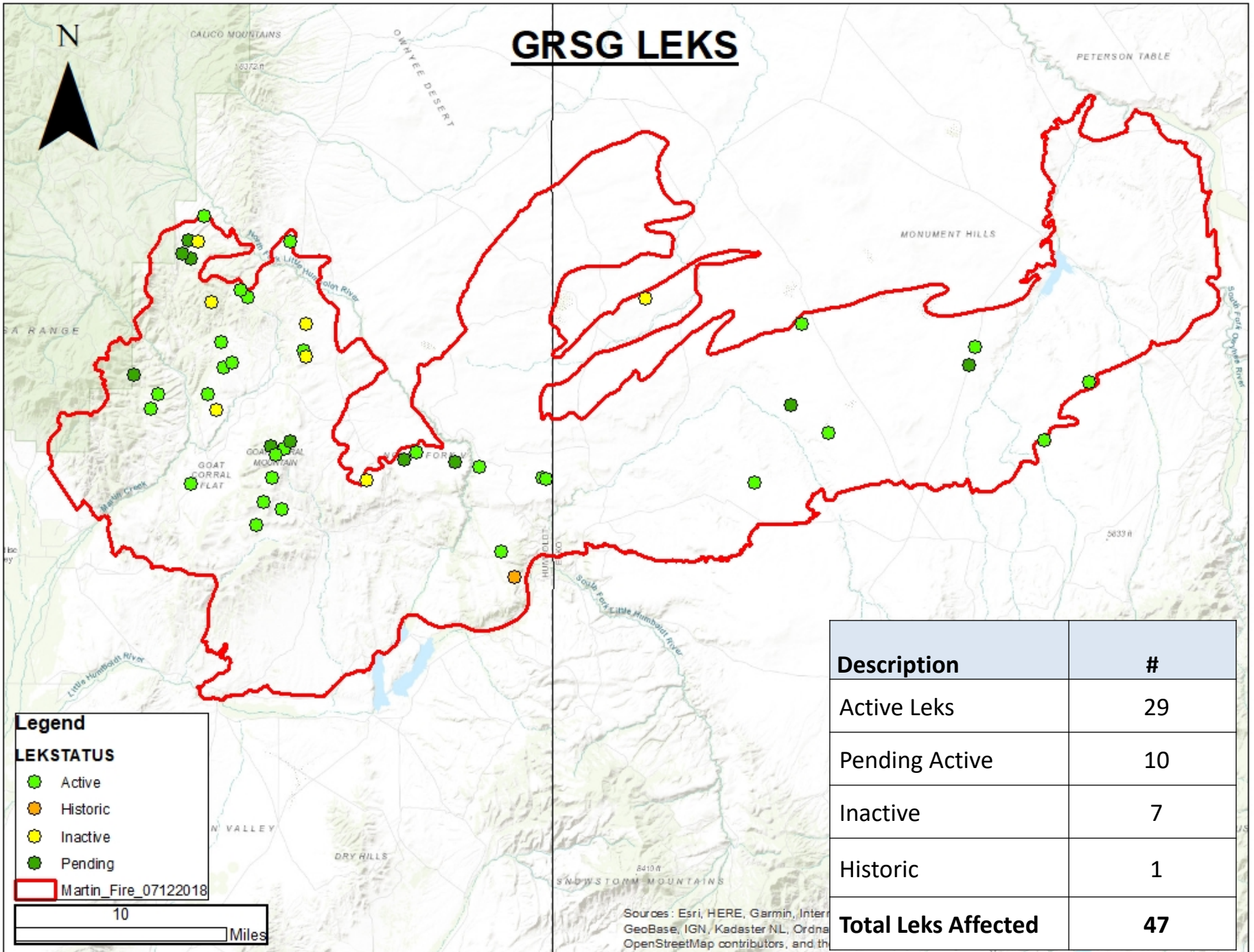


Description	Acres Impacted	Total Acres
Crawford CCS Project (Snowstorm Mtns acreage displayed)	0 (pers. Comm.)	11,134
West IL Ranch CCS Project	1,972 (24.5%)	8,058





# GRSG LEKS

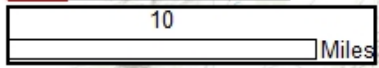


**Legend**

**LEKSTATUS**

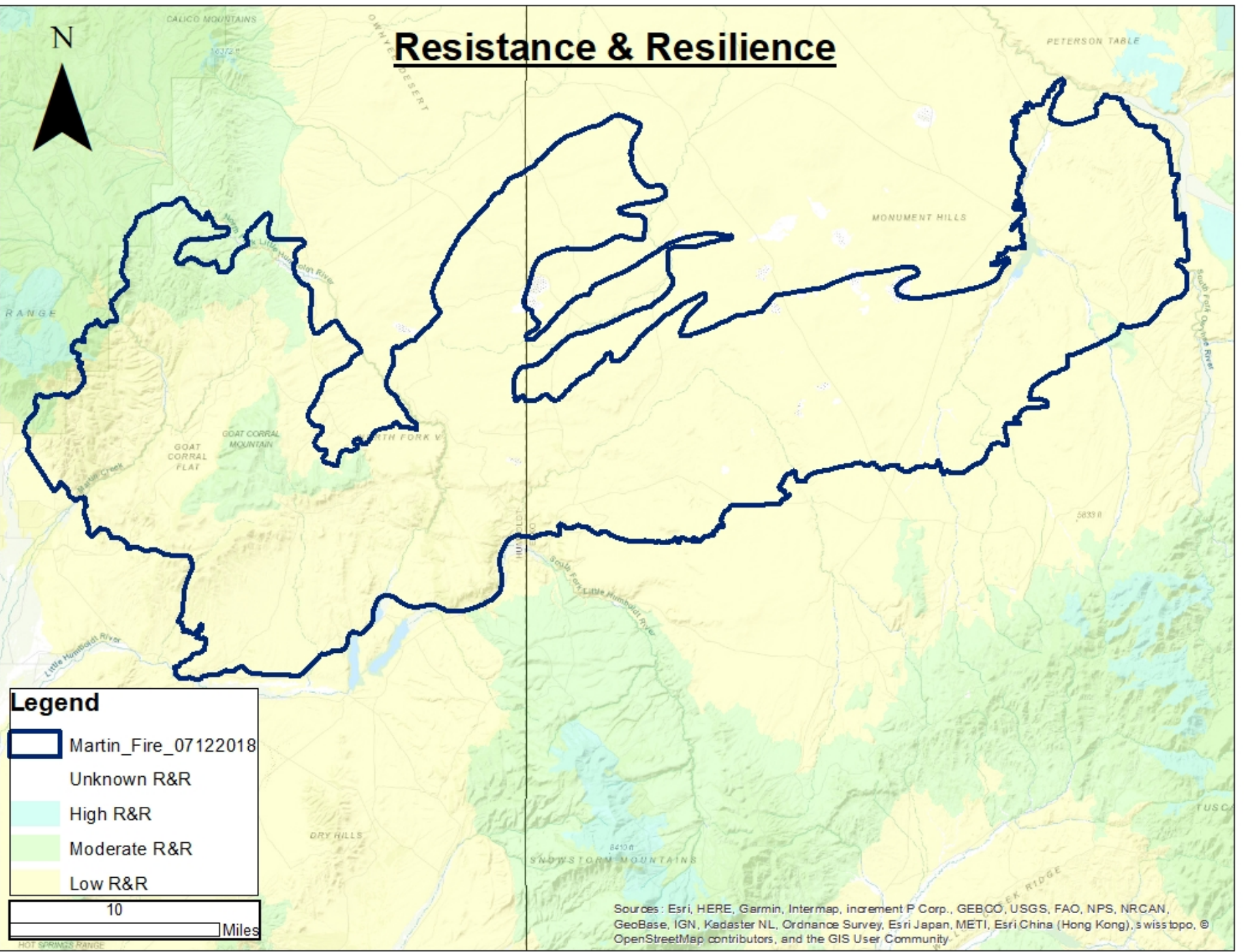
- Active
- Historic
- Inactive
- Pending

Martin\_Fire\_07122018




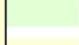



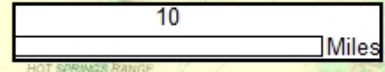
Sources: Esri, HERE, Garmin, InterGeoBase, IGN, Kadaster NL, Ordnance Survey, Esri, DeLorme, NAVTEQ, Swisstopo, Mapbox, OpenStreetMap contributors, and the

# Resistance & Resilience



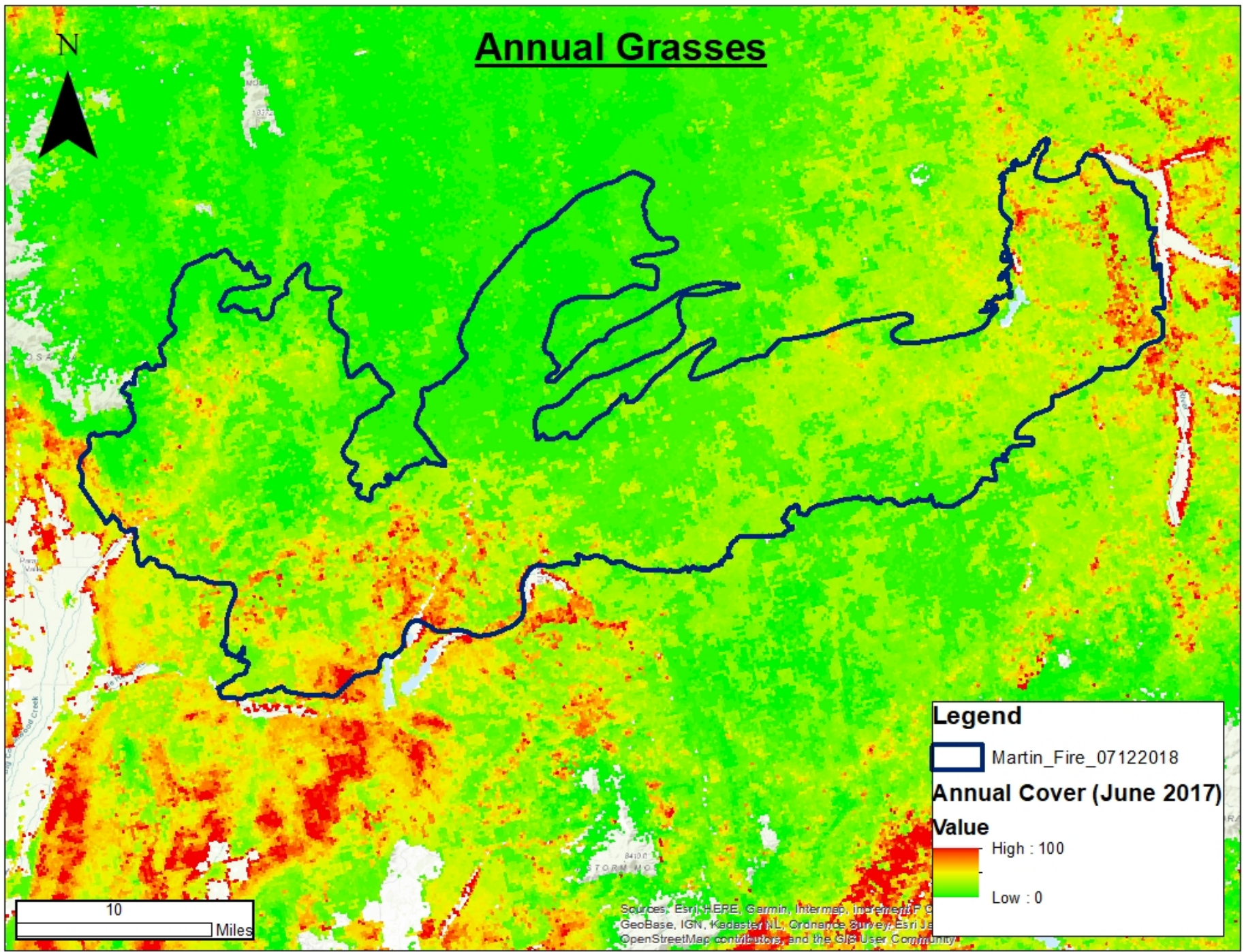
**Legend**

-  Martin\_Fire\_07122018
-  Unknown R&R
-  High R&R
-  Moderate R&R
-  Low R&R




Sources: Esri, HERE, Garmin, Intermap, increment P Corp., GEBCO, USGS, FAO, NPS, NRCAN, GeoBase, IGN, Kadaster NL, Ordnance Survey, Esri Japan, METI, Esri China (Hong Kong), swiss topo, © OpenStreetMap contributors, and the GIS User Community.

# Annual Grasses




**Legend**

 Martin\_Fire\_07122018

**Annual Cover (June 2017)**

**Value**

 High : 100

Low : 0

10 Miles

Sources: Esri, HERE, Garmin, Intermap, increment P Corp., GeoBase, IGN, Kadaster NL, Ordnance Survey, Esri Japan, Swisstopo, The GIS User Community, and the OpenStreetMap contributors.